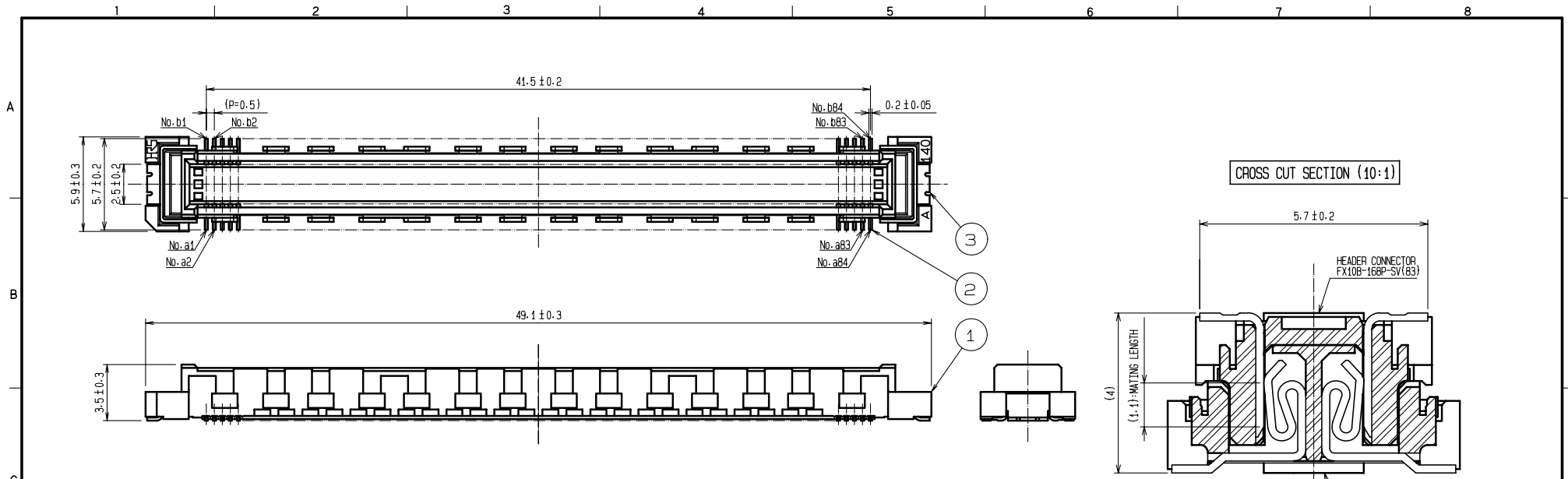
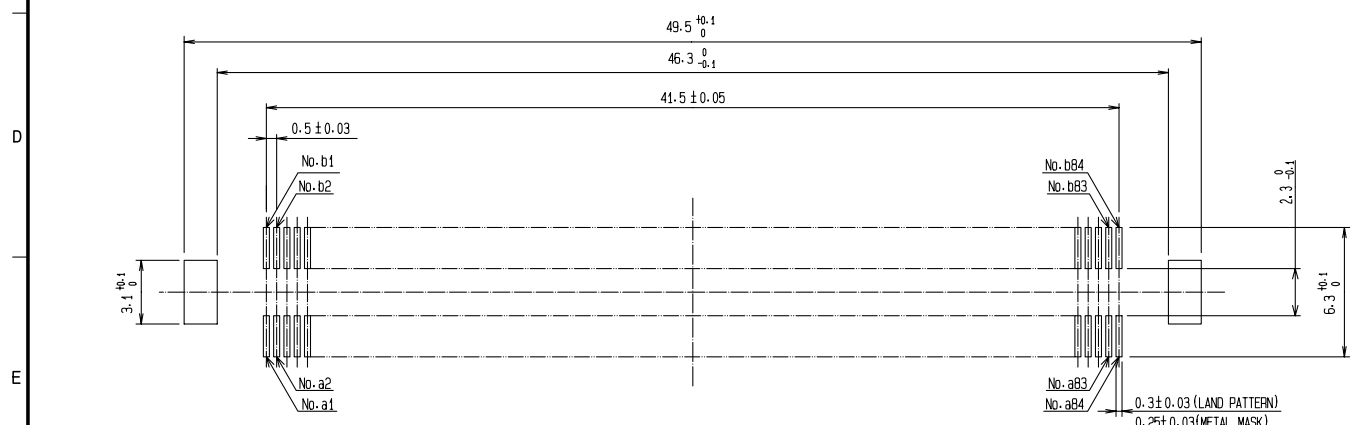


| APPLICABLE STANDARD   |   |                                |                                      |   |   |                             |     |
|---|---|--------------------------------|--------------------------------------|---|---|-----------------------------|-----|
| RATING  | OPERATING TEMPERATURE RANGE   | -55 °C TO 85 °C <sup>(1)</sup> |                                      | STORAGE TEMPERATURE RANGE   | -10 °C TO 60 °C <sup>(2)</sup>                |                             |     |
|   | VOLTAGE   | 50 V AC                        |                                      | OPERATING HUMIDITY RANGE  | RELATIVE HUMIDITY 95 % RH MAX. <sup>(3)</sup> |                             |     |
|   | CURRENT   | 0.75A                          | No.a1~a8,a77~a84<br>No.b1~b8,b77~b84 |   | STORAGE HUMIDITY RANGE                        | 40 % TO 70 % <sup>(2)</sup> |     |
| 0.3A  |   | No.a9~a76,b9~b76               |                                      |   |   |                             |     |
| <b>SPECIFICATIONS</b>   |   |                                |                                      |   |   |                             |     |
| ITEM  | TEST METHOD   |                                |                                      | REQUIREMENTS  |   | QT                          | AT  |
| <b>CONSTRUCTION</b>   |   |                                |                                      |   |   |                             |     |
| GENERAL EXAMINATION   | VISUALLY AND BY MEASURING INSTRUMENT.   |                                |                                      | ACCORDING TO DRAWING.   |   | x                           | x   |
| MARKING   | CONFIRMED VISUALLY.   |                                |                                      |   |   | x                           | x   |
| <b>ELECTRIC CHARACTERISTICS</b>   |   |                                |                                      |   |   |                             |     |
| CONTACT RESISTANCE  | 100 mA (DC OR 1000 Hz).   |                                |                                      | 60 mΩ MAX.  |   | x                           | -   |
| INSULATION RESISTANCE   | 100 V DC  |                                |                                      | 100 MΩ MIN.   |   | x                           | -   |
| VOLTAGE PROOF   | 150 V AC FOR 1 min.   |                                |                                      | NO FLASHOVER OR BREAKDOWN.  |   | x                           | x   |
| <b>MECHANICAL CHARACTERISTICS</b>   |   |                                |                                      |   |   |                             |     |
| INSERTION AND WITHDRAWAL FORCE  | MEASURED BY APPLICABLE CONNECTOR.   |                                |                                      | INSERTION FORCE: 100.8 N MAX.<br>WITHDRAWAL FORCE: 4.2 N MIN.                                 |   | x                           | -   |
| MECHANICAL OPERATION  | 50 TIMES INSERTIONS AND EXTRACTIONS.  |                                |                                      | ① CONTACT RESISTANCE: 70 mΩ MAX.<br>② NO DAMAGE, CRACK AND LOOSENESS OF PARTS.                |   | x                           | -   |
| VIBRATION   | FREQUENCY 10 TO 55 Hz,<br>SINGLE AMPLITUDE : 0.75 mm,<br>AT 10 CYCLES FOR 3 DIRECTIONS.                   |                                |                                      | ① NO ELECTRICAL DISCONTINUITY OF 1 μs.<br>② NO DAMAGE, CRACK AND LOOSENESS OF PARTS.          |   | x                           | -   |
| SHOCK   | 490 m/s <sup>2</sup> , DURATION OF PULSE 11 ms<br>AT 3 TIMES FOR 3 DIRECTIONS.                            |                                |                                      |   |   | x                           | -   |
| <b>ENVIRONMENTAL CHARACTERISTICS</b>  |   |                                |                                      |   |   |                             |     |
| DAMP HEAT (STEADY STATE)  | EXPOSED AT 40±2 °C, 90 ~ 95 %, 96 h.  |                                |                                      | ① CONTACT RESISTANCE: 70 mΩ MAX.<br>② INSULATION RESISTANCE: 100 MΩ MIN.                      |   | x                           | -   |
| RAPID CHANGE OF TEMPERATURE   | TEMPERATURE-55→+15~+35→+85→+15~+35°C<br>TIME 30 → 2 ~ 3 → 30 → 2 ~ 3 min.<br>UNDER 5 CYCLES.              |                                |                                      | ③ NO DAMAGE, CRACK AND LOOSENESS OF PARTS.  |   | x                           | -   |
| DRY HEAT  | EXPOSED AT 85 °C, 96h.  |                                |                                      | ① CONTACT RESISTANCE: 70 mΩ MAX.  |   | x                           | -   |
| COLD  | EXPOSED AT -55 °C, 96h.   |                                |                                      | ② NO DAMAGE, CRACK AND LOOSENESS OF PARTS.  |   | x                           | -   |
| CORROSION SALT MIST   | EXPOSED IN 5 % SALT WATER SPRAY FOR 48 h.   |                                |                                      | ① CONTACT RESISTANCE: 70 mΩ MAX.<br>② NO HEAVY CORROSION.                                     |   | x                           | -   |
| SULPHUR DIOXIDE   | EXPOSED IN 10 PPM FOR 96 h.<br>(TEST STANDARD: JIS C 0090)  |                                |                                      |   |   | x                           | -   |
| RESISTANCE TO SOLDERING HEAT  | 1) REFLOW SOLDERING : 250 °C MAX,<br>: 220 °C MIN,<br>FOR 60 s<br>2) SOLDERING IRONS : 360 °C,<br>FOR 5 s |                                |                                      | NO DEFORMATION OF CASE OF EXCESSIVE LOOSENESS OF THE TERMINAL.                                |   | x                           | -   |
| SOLDERABILITY   | SOLDERED AT SOLDER TEMPERATURE, 240°C,<br>FOR IMMERSION DURATION, 3 s.                                    |                                |                                      | A NEW UNIFORM COATING OF SOLDER SHALL COVER A MINIMUM OF 95 % OF THE SURFACE BEING IMMERSSED. |   | x                           | -   |
|   |   |                                |                                      |   |   |                             |     |
|   | COUNT   | DESCRIPTION OF REVISIONS       |                                      | DESIGNED  | CHECKED                                       | DATE                        |     |
| △   |   |                                |                                      |   |   |                             |     |
| REMARK <sup>(1)</sup> TEMPERATURE RISE INCLUDED WHEN ENERGIZED.<br><sup>(2)</sup> THIS STORAGE INDICATES A LONG-TERM STORAGE STATE FOR THE UNUSED PRODUCT BEFORE THE BOARD MOUNTED.<br><sup>(3)</sup> NO DEW CONDENSATION IS PERMITTED.<br>Unless otherwise specified, refer to JIS C 5402. |   |                                |                                      | APPROVED  | HS. OKAWA                                     | 10.02.04                    |     |
|   |   |                                |                                      | CHECKED   | HT. YAMAGUCHI                                 | 10.02.04                    |     |
|   |   |                                |                                      | DESIGNED  | AH. EDASHIGE                                  | 10.02.04                    |     |
|   |   |                                |                                      | DRAWN   | HK. SUNADORI                                  | 10.02.04                    |     |
| Note QT:Qualification Test AT:Assurance Test X:Applicable Test  |   |                                |                                      | DRAWING NO.   |   | TELC4-210581                |     |
| <b>HRS</b>  | SPECIFICATION SHEET   |                                |                                      | PART NO.  | FX10B-168P-SV (83)                            |                             |     |
|   | HIROSE ELECTRIC CO., LTD.   |                                |                                      | CODE NO.  | CL570   | △                           | 1/1 |



RECOMMENDED LAND PATTERN DIMENSION OF PCB  
(RECOMMENDED METAL MASK THICKNESS: 0.15mm)

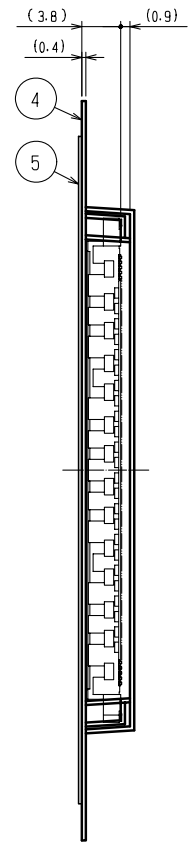
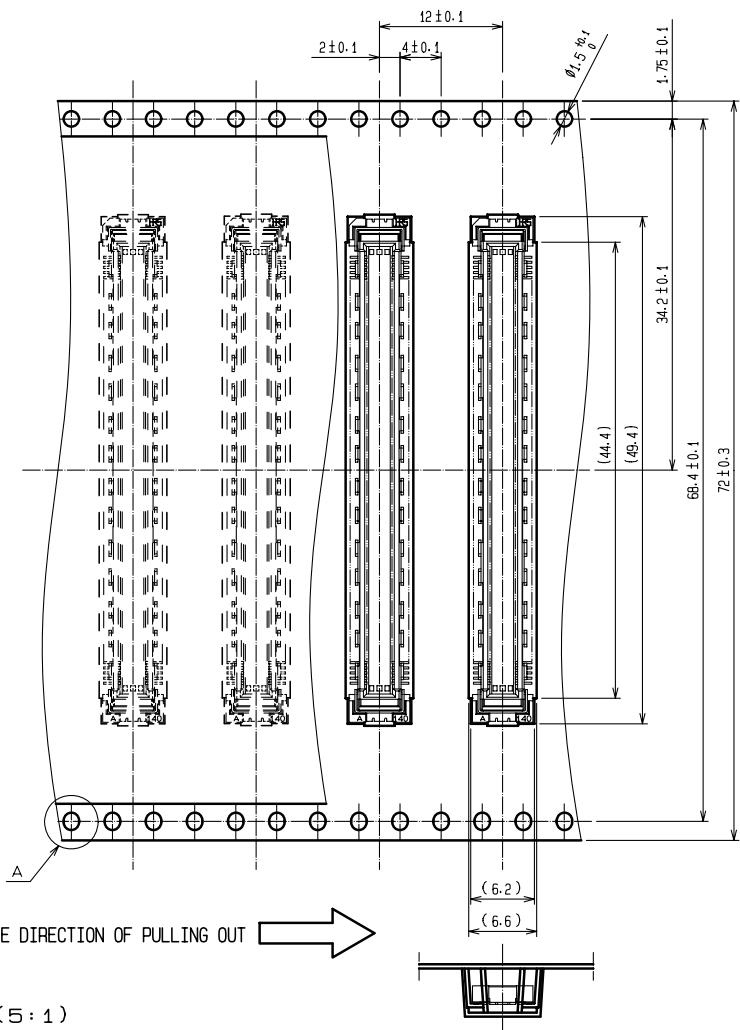


PRELIMINARY DRAWING

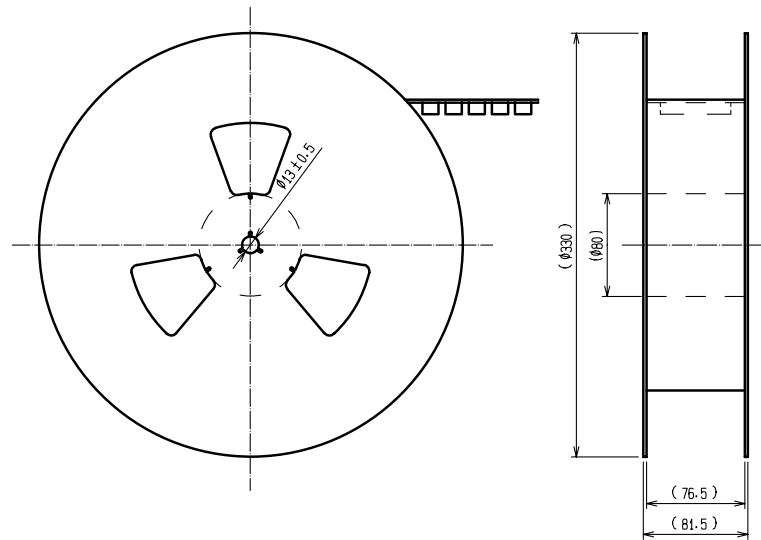
- NOTES
- 1 SMT LEAD-COPLANARITY: 0.1 MAX.
  - 2 THIS PRODUCT HAS NO POLARITY TO PATTERN FOR MOUNTING.
  - 3 THE DIMENSIONS IN PARENTHESES ARE FOR REFERENCE.

| 2                       | PHOSPHOR BRONZE | CONTACT AREA: GOLD 0.76µm min.     | 5     | PET             | TOP COVER TAPE                 |                   |         |      |
|-------------------------|-----------------|------------------------------------|-------|-----------------|--------------------------------|-------------------|---------|------|
|                         |                 | LEAD AREA: TIN-PLATING 0.03µm min. | 4     | PS              | EMBOSSSED CARRIER TAPE         |                   |         |      |
|                         |                 | UNDER PLATING: NICKEL 1.3µm min.   | 3     | PHOSPHOR BRONZE | SURFACE AREA: GOLD 0.03µm min. |                   |         |      |
| 1                       | LCP             | BEIGE UL94V-0                      |       |                 | UNDER PLATING: NICKEL 1µm min. |                   |         |      |
| NO.                     | MATERIAL        | FINISH . REMARKS                   | NO.   | MATERIAL        | FINISH . REMARKS               |                   |         |      |
| UNITS                   | mm              | SCALE                              | 4 : 1 | COUNT           | DESCRIPTION OF REVISIONS       | DESIGNED          | CHECKED | DATE |
| APPROVED : HS. OKAWA    |                 | 10.02.04                           |       | DRAWING NO.     |                                | TEDC3-210581      |         |      |
| CHECKED : HT. YAMAGUCHI |                 | 10.02.04                           |       | PART NO.        |                                | FX10B-168P-SV(83) |         |      |
| DESIGNED : AH. EDASHIGE |                 | 10.02.04                           |       | CODE NO.        |                                | CL570             |         |      |
| DRAWN : AH. EDASHIGE    |                 | 10.02.04                           |       |                 |                                |                   |         |      |

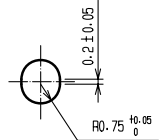
# DRAWING FOR PACKING(2:1)



REELED DIMENSION(Free)



A (5:1)



- NOTES
- 1 REEL : 1000 CONNECTORS.
  - 2 MINIMUM 10 COMPARTMENTS FROM BOTH REEL ENDS REMAIN EMPTY.
  - 3 THIS PRODUCT HAS NO POLARITY TO TAPE AND REEL PACKAGING.
  - 4 THE DIMENSIONS IN PARENTHESES ARE FOR REFERENCE.

|            |             |                   |       |
|------------|-------------|-------------------|-------|
| <b>HRS</b> | DRAWING NO. | TEDC3-210581      | △ 2/2 |
|            | PART NO.    | FX10B-168P-SV(83) |       |
|            | CODE NO.    | CL570             |       |
|            |             |                   |       |