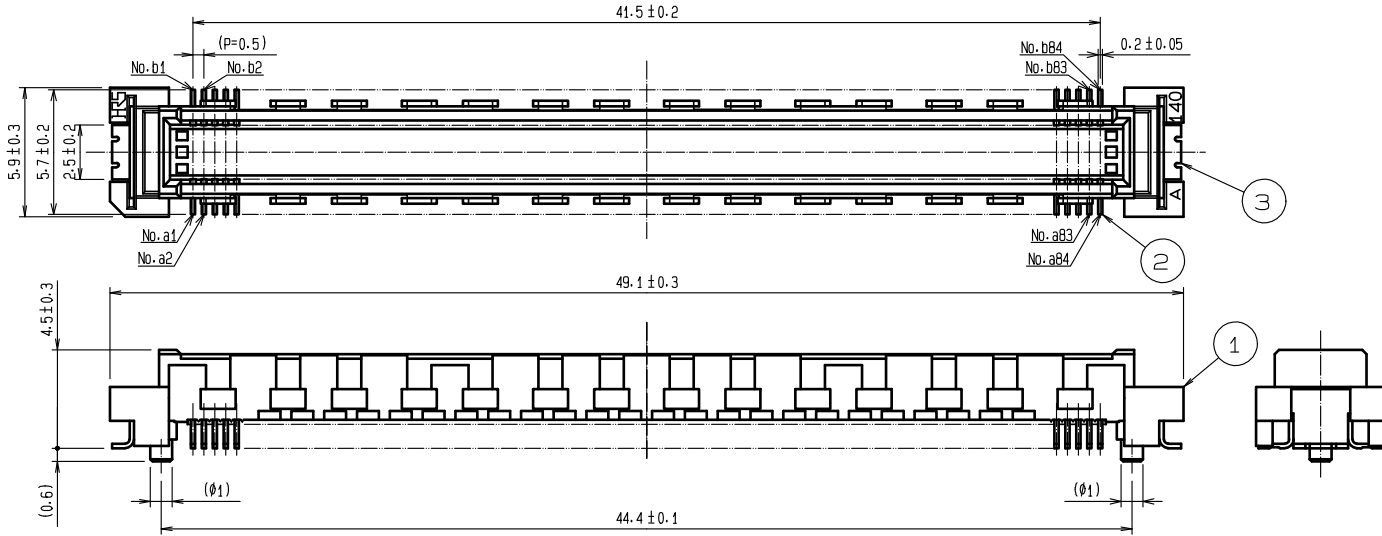
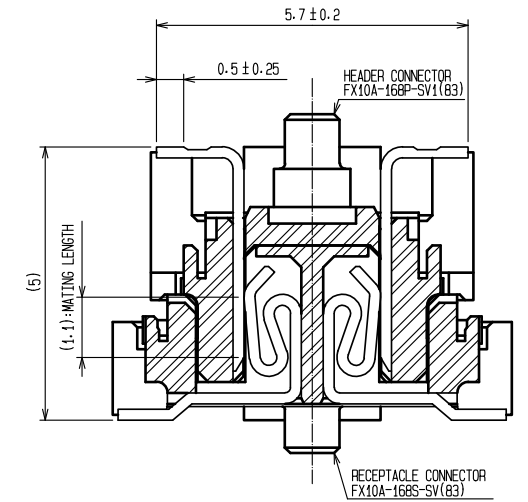


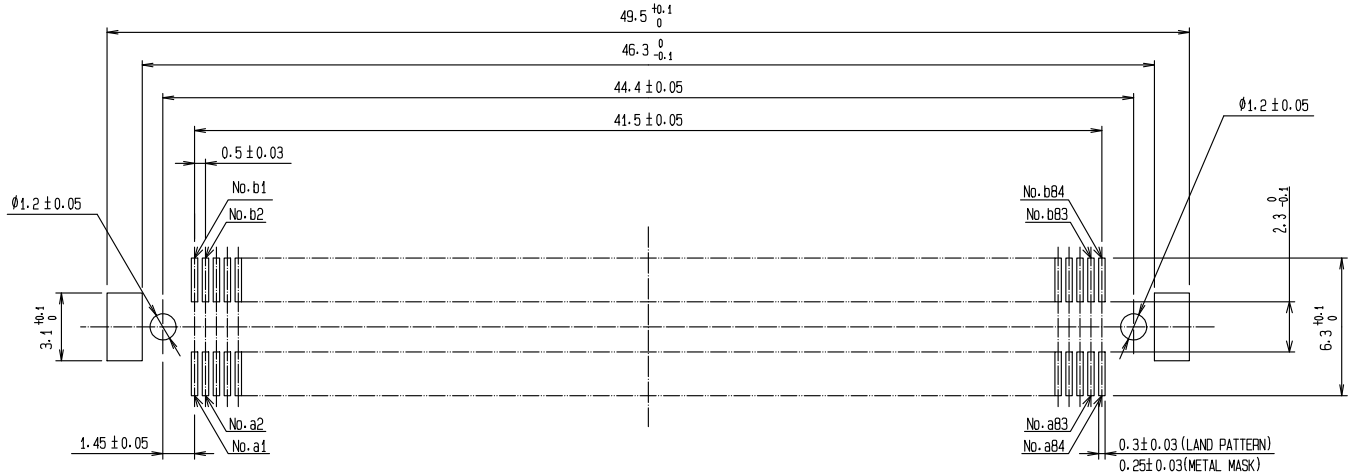
| APPLICABLE STANDARD   |  |                                      |                                      |   |   |                                   |     |  |
|---|--|--------------------------------------|--------------------------------------|---|---|-----------------------------------|-----|--|
| RATING  | OPERATING TEMPERATURE RANGE  | <b>-55 °C TO 85 °C<sup>(1)</sup></b> |                                      | STORAGE TEMPERATURE RANGE   | <b>-10 °C TO 60 °C<sup>(2)</sup></b>                |                                   |     |  |
|   | VOLTAGE  | <b>50 V AC</b>                       |                                      | OPERATING HUMIDITY RANGE  | <b>RELATIVE HUMIDITY 95 % RH MAX.<sup>(3)</sup></b> |                                   |     |  |
|   | CURRENT  | 0.75A                                | No.a1~a8,a77~a84<br>No.b1~b8,b77~b84 |   | STORAGE HUMIDITY RANGE                              | <b>40 % TO 70 %<sup>(2)</sup></b> |     |  |
|   |  | 0.3A                                 | No.a9~a76,b9~b76                     |   |   |                                   |     |  |
| SPECIFICATIONS  |  |                                      |                                      |   |   |                                   |     |  |
| ITEM  | TEST METHOD  |                                      |                                      | REQUIREMENTS  | QT  | AT                                |     |  |
| CONSTRUCTION  |  |                                      |                                      |   |   |                                   |     |  |
| GENERAL EXAMINATION   | VISUALLY AND BY MEASURING INSTRUMENT.  |                                      |                                      | ACCORDING TO DRAWING.   | x   | x                                 |     |  |
| MARKING   | CONFIRMED VISUALLY.  |                                      |                                      |   | x   | x                                 |     |  |
| ELECTRIC CHARACTERISTICS  |  |                                      |                                      |   |   |                                   |     |  |
| CONTACT RESISTANCE  | 100 mA (DC OR 1000 Hz).  |                                      |                                      | 60 mΩ MAX.  | x   | -                                 |     |  |
| INSULATION RESISTANCE   | 100 V DC   |                                      |                                      | 100 MΩ MIN.   | x   | -                                 |     |  |
| VOLTAGE PROOF   | 150 V AC FOR 1 min.  |                                      |                                      | NO FLASHOVER OR BREAKDOWN.  | x   | x                                 |     |  |
| MECHANICAL CHARACTERISTICS  |  |                                      |                                      |   |   |                                   |     |  |
| INSERTION AND WITHDRAWAL FORCE  | MEASURED BY APPLICABLE CONNECTOR.  |                                      |                                      | INSERTION FORCE: <b>100.8 N MAX.</b><br>WITHDRAWAL FORCE: <b>4.2 N MIN.</b>                   | x   | -                                 |     |  |
| MECHANICAL OPERATION  | 50 TIMES INSERTIONS AND EXTRACTIONS.   |                                      |                                      | ① CONTACT RESISTANCE: <b>70 mΩ MAX.</b><br>② NO DAMAGE, CRACK AND LOOSENESS OF PARTS.         | x   | -                                 |     |  |
| VIBRATION   | FREQUENCY 10 TO 55 Hz,<br>SINGLE AMPLITUDE : 0.75 mm,<br>AT 10 CYCLES FOR 3 DIRECTIONS.                                |                                      |                                      | ① NO ELECTRICAL DISCONTINUITY OF 1 μs.<br>② NO DAMAGE, CRACK AND LOOSENESS OF PARTS.          | x   | -                                 |     |  |
| SHOCK   | 490 m/s <sup>2</sup> , DURATION OF PULSE 11 ms<br>AT 3 TIMES FOR 3 DIRECTIONS.   |                                      |                                      |   | x   | -                                 |     |  |
| ENVIRONMENTAL CHARACTERISTICS   |  |                                      |                                      |   |   |                                   |     |  |
| DAMP HEAT (STEADY STATE)  | EXPOSED AT 40±2 °C, 90 ~ 95 %, 96 h.   |                                      |                                      | ① CONTACT RESISTANCE: <b>70 mΩ MAX.</b><br>② INSULATION RESISTANCE: <b>100 MΩ MIN.</b>        | x   | -                                 |     |  |
| RAPID CHANGE OF TEMPERATURE   | TEMPERATURE <b>-55 → +15 ~ +35 → +85 → +15 ~ +35 °C</b><br>TIME <b>30 → 2 ~ 3 → 30 → 2 ~ 3 min.</b><br>UNDER 5 CYCLES. |                                      |                                      | ③ NO DAMAGE, CRACK AND LOOSENESS OF PARTS.  | x   | -                                 |     |  |
| DRY HEAT  | EXPOSED AT 85 °C, 96h.   |                                      |                                      | ① CONTACT RESISTANCE: <b>70 mΩ MAX.</b>   | x   | -                                 |     |  |
| COLD  | EXPOSED AT -55 °C, 96h.  |                                      |                                      | ② NO DAMAGE, CRACK AND LOOSENESS OF PARTS.  | x   | -                                 |     |  |
| CORROSION SALT MIST   | EXPOSED IN 5 % SALT WATER SPRAY FOR 48 h.  |                                      |                                      | ① CONTACT RESISTANCE: <b>70 mΩ MAX.</b><br>② NO HEAVY CORROSION.                              | x   | -                                 |     |  |
| SULPHUR DIOXIDE   | EXPOSED IN <b>10 PPM</b> FOR <b>96 h.</b><br>(TEST STANDARD: <b>JIS C 0090</b> )                                       |                                      |                                      |   | x   | -                                 |     |  |
| RESISTANCE TO SOLDERING HEAT  | 1) REFLOW SOLDERING : 250 °C MAX,<br>: 220 °C MIN,<br>FOR 60 s<br>2) SOLDERING IRONS : 360 °C,<br>FOR 5 s              |                                      |                                      | NO DEFORMATION OF CASE OF EXCESSIVE LOOSENESS OF THE TERMINAL.                                | x   | -                                 |     |  |
| SOLDERABILITY   | SOLDERED AT SOLDER TEMPERATURE, 240°C,<br>FOR IMMERSION DURATION, 3 s.   |                                      |                                      | A NEW UNIFORM COATING OF SOLDER SHALL COVER A MINIMUM OF 95 % OF THE SURFACE BEING IMMERSSED. | x   | -                                 |     |  |
|   |  |                                      |                                      |   |   |                                   |     |  |
|   | COUNT  | DESCRIPTION OF REVISIONS             |                                      | DESIGNED  | CHECKED   | DATE                              |     |  |
|   |  |                                      |                                      |   |   |                                   |     |  |
| REMARK <sup>(1)</sup> TEMPERATURE RISE INCLUDED WHEN ENERGIZED.<br><sup>(2)</sup> THIS STORAGE INDICATES A LONG-TERM STORAGE STATE FOR THE UNUSED PRODUCT BEFORE THE BOARD MOUNTED.<br><sup>(3)</sup> NO DEW CONDENSATION IS PERMITTED.<br>Unless otherwise specified, refer to JIS C 5402. |  |                                      |                                      | APPROVED  | HS. OKAWA   | 09. 12. 24                        |     |  |
|   |  |                                      |                                      | CHECKED   | HT. YAMAGUCHI                                       | 09. 12. 24                        |     |  |
|   |  |                                      |                                      | DESIGNED  | TP. MATSUMOTO                                       | 09. 12. 24                        |     |  |
|   |  |                                      |                                      | DRAWN   | HK. SUNADORI  | 09. 12. 24                        |     |  |
| Note QT:Qualification Test AT:Assurance Test X:Applicable Test  |  |                                      |                                      | DRAWING NO.   | TEL C4-210539                                       |                                   |     |  |
|   | SPECIFICATION SHEET  |                                      |                                      | PART NO.  | FX10A-168P-SV1 (83)                                 |                                   |     |  |
|   | HIROSE ELECTRIC CO., LTD.  |                                      |                                      | CODE NO.  | CL570   |                                   | 1/1 |  |



CROSS CUT SECTION (10:1)



RECOMMENDED LAND PATTERN DIMENSION OF PCB  
(RECOMMENDED METAL MASK THICKNESS: 0.15mm)

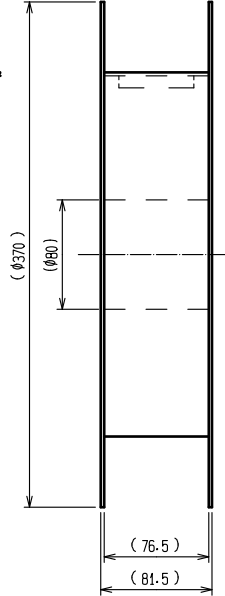
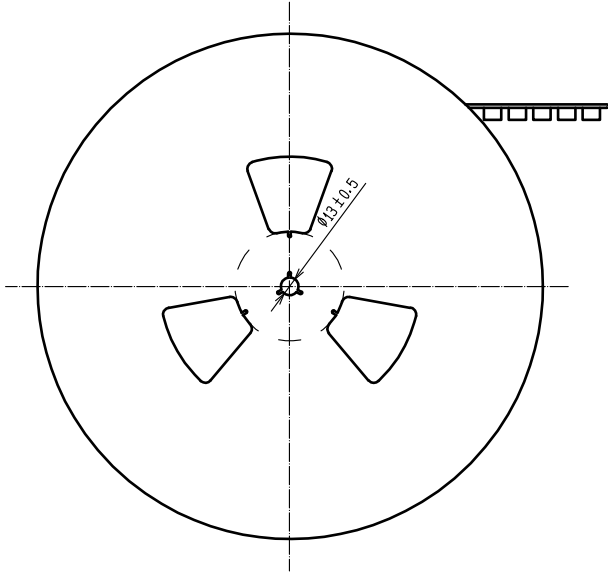
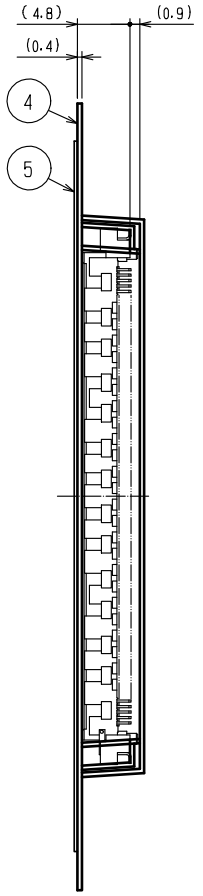
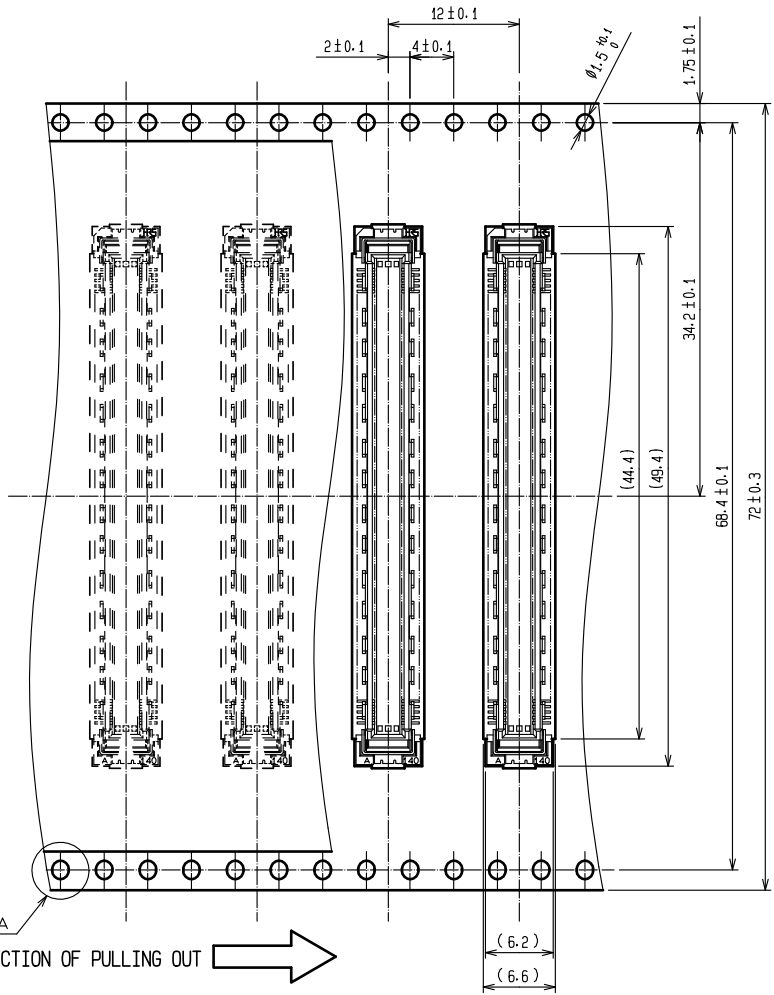


- NOTES
- 1 SMT LEAD-COPLANARITY: 0.1 MAX.
  - 2 THIS PRODUCT HAS NO POLARITY TO PATTERN FOR MOUNTING.
  - 3 THE DIMENSIONS IN PARENTHESES ARE FOR REFERENCE.

| 2     | PHOSPHOR BRONZE | CONTACT AREA: GOLD 0.76µm min.<br>LEAD AREA: GOLD 0.03µm min. | 5        | PET                      | TOP COVER TAPE   |                              |      |
|-------|-----------------|---|----------|--------------------------|--|------------------------------|------|
|       |                 | UNDER PLATING: NICKEL 1.3µm min.                              | 4        | PS                       | EMBOSSD CARRIER TAPE   |                              |      |
| 1     | LCP             | BEIGE UL94V-0   | 3        | PHOSPHOR BRONZE          | SURFACE AREA: GOLD 0.03µm min.<br>UNDER PLATING: NICKEL 1µm min. |                              |      |
| NO.   | MATERIAL        | FINISH . REMARKS  | NO.      | MATERIAL                 | FINISH . REMARKS   |                              |      |
| UNITS |                 | SCALE   | COUNT    | DESCRIPTION OF REVISIONS | DESIGNED   | CHECKED                      | DATE |
| mm    |                 | 4 : 1   | △        |                          |  |                              |      |
|       |                 | HIROSE ELECTRIC CO., LTD.                                     | APPROVED | HS. OKAWA                | 10. 01. 26   | DRAWING NO. TEDC3-210539     |      |
|       |                 |   | CHECKED  | HT. YAMAGUCHI            | 10. 01. 26   | PART NO. FX10A-168P-SV1 (83) |      |
|       |                 |   | DESIGNED | AH. EDASHIGE             | 10. 01. 26   | CODE NO. CL570               |      |
|       |                 |   | DRAWN    | HK. SUNADORI             | 10. 01. 26   | 1/2                          |      |

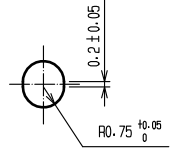
# DRAWING FOR PACKING(2:1)

REELED DIMENSION(Free)



THE DIRECTION OF PULLING OUT

A(5:1)



- NOTES
- 1 REEL:500~1000 CONNECTORS.
  - 2 MINIMUM 10 COMPARTMENTS FROM BOTH REEL ENDS REMAIN EMPTY.
  - 3 THIS PRODUCT HAS NO POLARITY TO TAPE AND REEL PACKAGING.
  - 4 THE DIMENSIONS IN PARENTHESES ARE FOR REFERENCE.

|            |             |                    |
|------------|-------------|--------------------|
| <b>HRS</b> | DRAWING NO. | TEDC3-210539       |
|            | PART NO.    | FX10A-168P-SV1(83) |
|            | CODE NO.    | CL570              |
|            |             |                    |